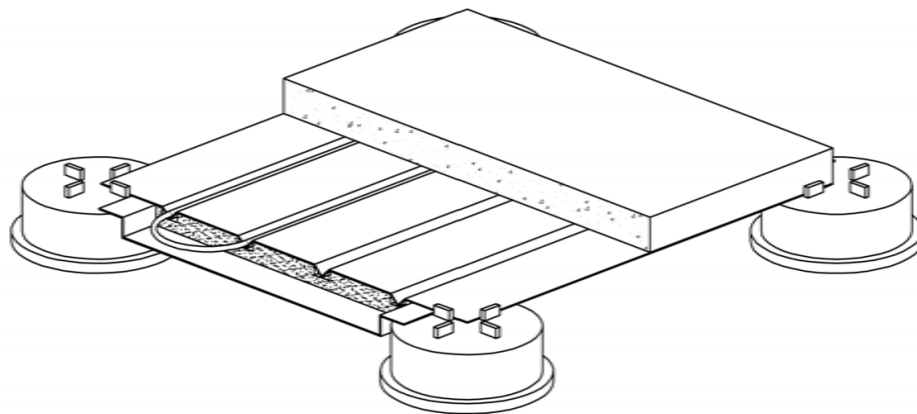


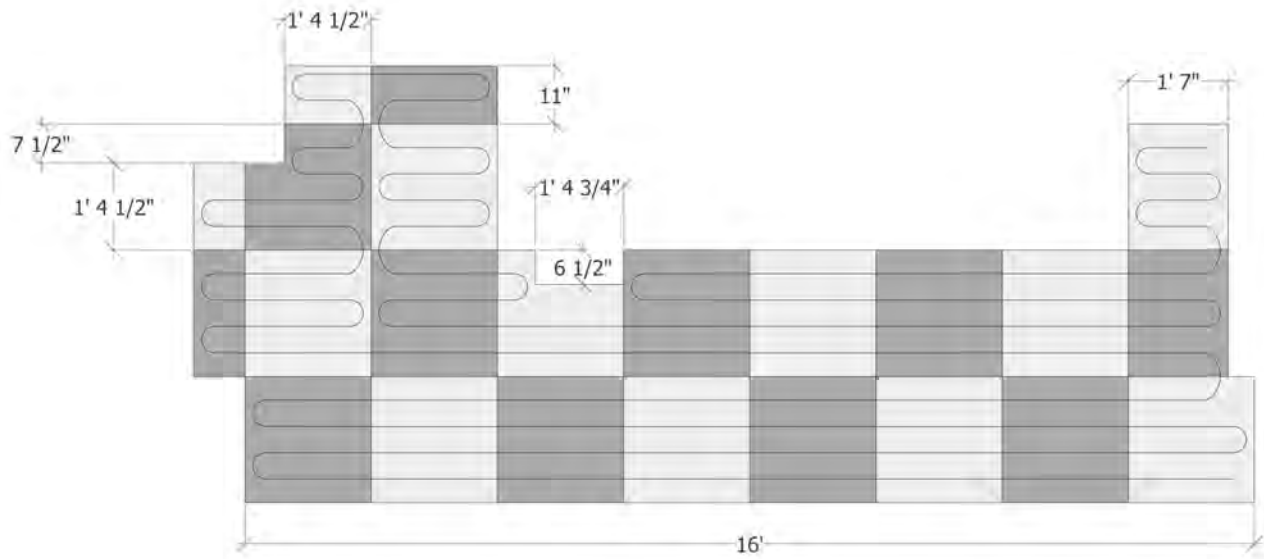
HEATIZON SYSTEMS

RADIANT HEATING AND SNOW MELTING SYSTEMS

HEATIZON PEDESTAL PAVER INSTALLATION GUIDE

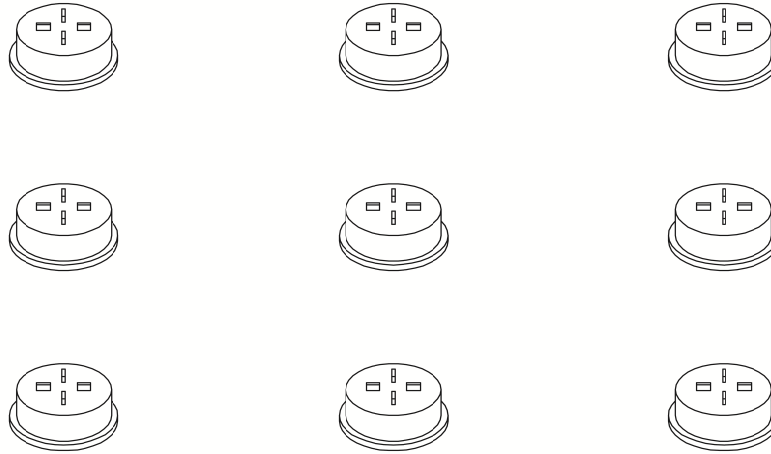


© 2017 Heatizon Systems

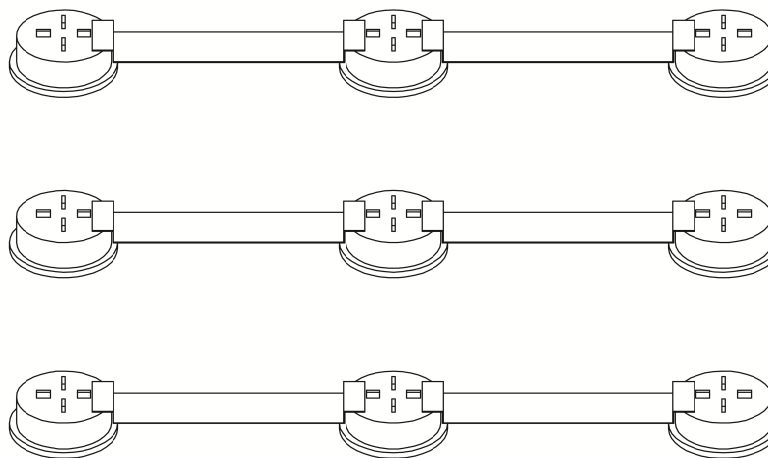


NOTE: HEATIZON PEDESTAL PAVER SNOW MELT SYSTEMS ARE CUSTOM DESIGNED FOR YOUR PROJECT. PLEASE BE SURE TO FOLLOW THE LAYOUT DESIGN PROVIDED TO YOUR AUTHORITY OR REPRESENTATIVE WHEN PURCHASING OUR HOT-WIRE MI CABLE FOR YOUR PROJECT.

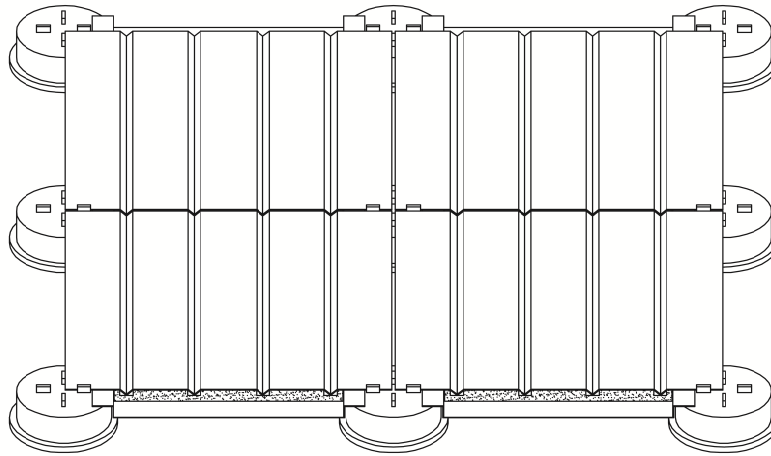
1. FOLLOW THE PEDESTAL MANUFACTURERS INSTRUCTIONS AND THE HOTT-WIRE INSTRUCTIONS WHEN INSTALLING A HEATIZON PEDESTAL PAVER SNOW MELT SYSTEM. ONE ROW OF PEDESTALS NEED TO BE INSTALLED AT A TIME WHEN LAYING THE SYSTEM OUT TO ALLOW ACCURATE PEDESTALS ARE INSTALLED FIRST BEFORE THE BRACKET AND PAN ARE ASSEMBLED AND INSTALLED.



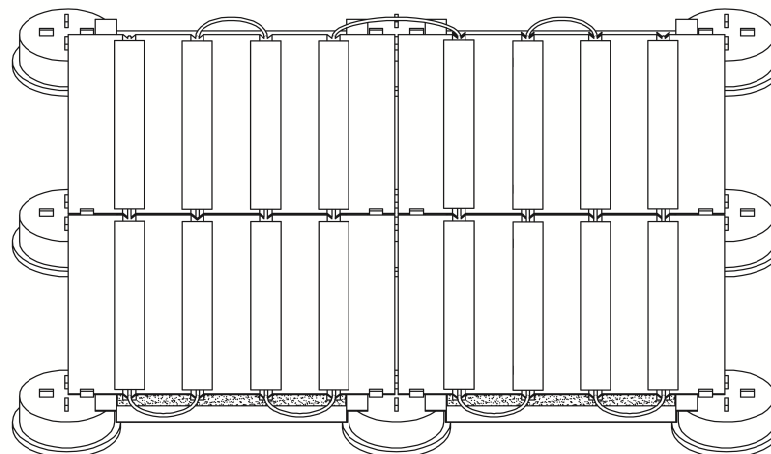
2. BRACKETS (noted) ARE PLACED ACROSS TWO PEDESTALS TO SUPPORT THE PAN SYSTEM. BRACKETS ARE INSTALLED PERPENDICULAR TO THE CABLE RUN IN THE PAN.



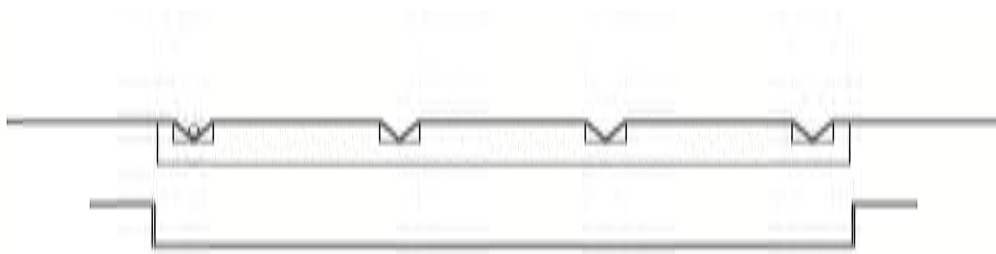
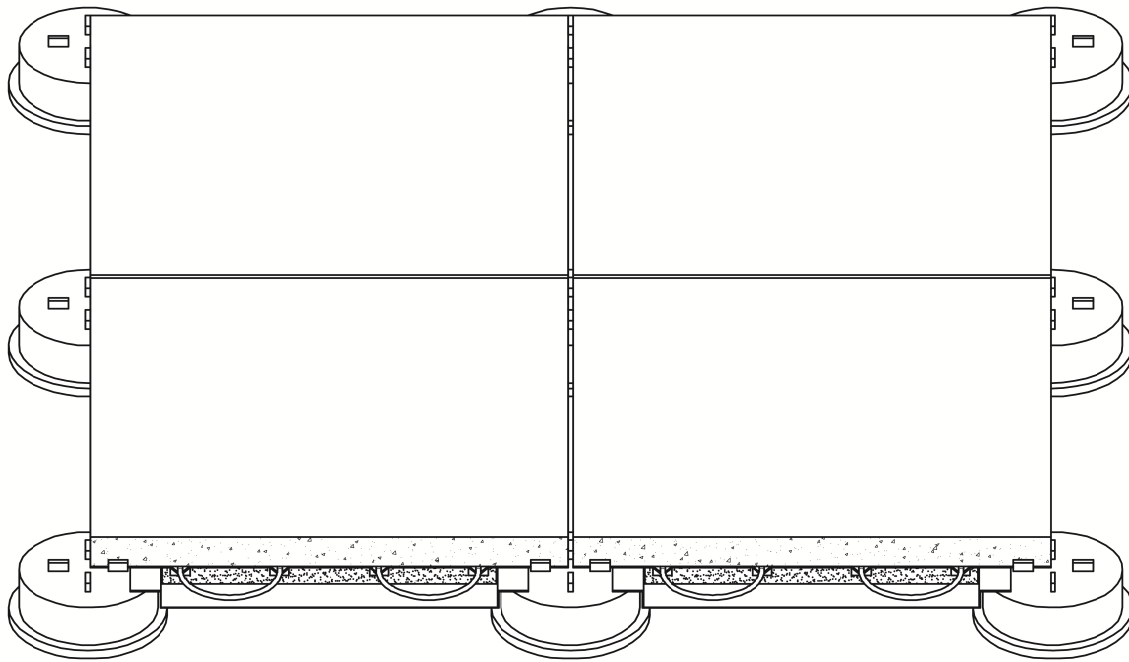
3. ONCE A ROW OF BRACKETS HAVE BEEN INSTALLED, THE PAN CAN BE PLACED ON PEDESTALS. MAKE SURE TO MEASURE THE SPACING OF THE PEDESTALS FOR THE PAN SLIGHTLY SMALLER THAN A PAVER TO ALLOW FOR EXPANSION AND CONTRACTION



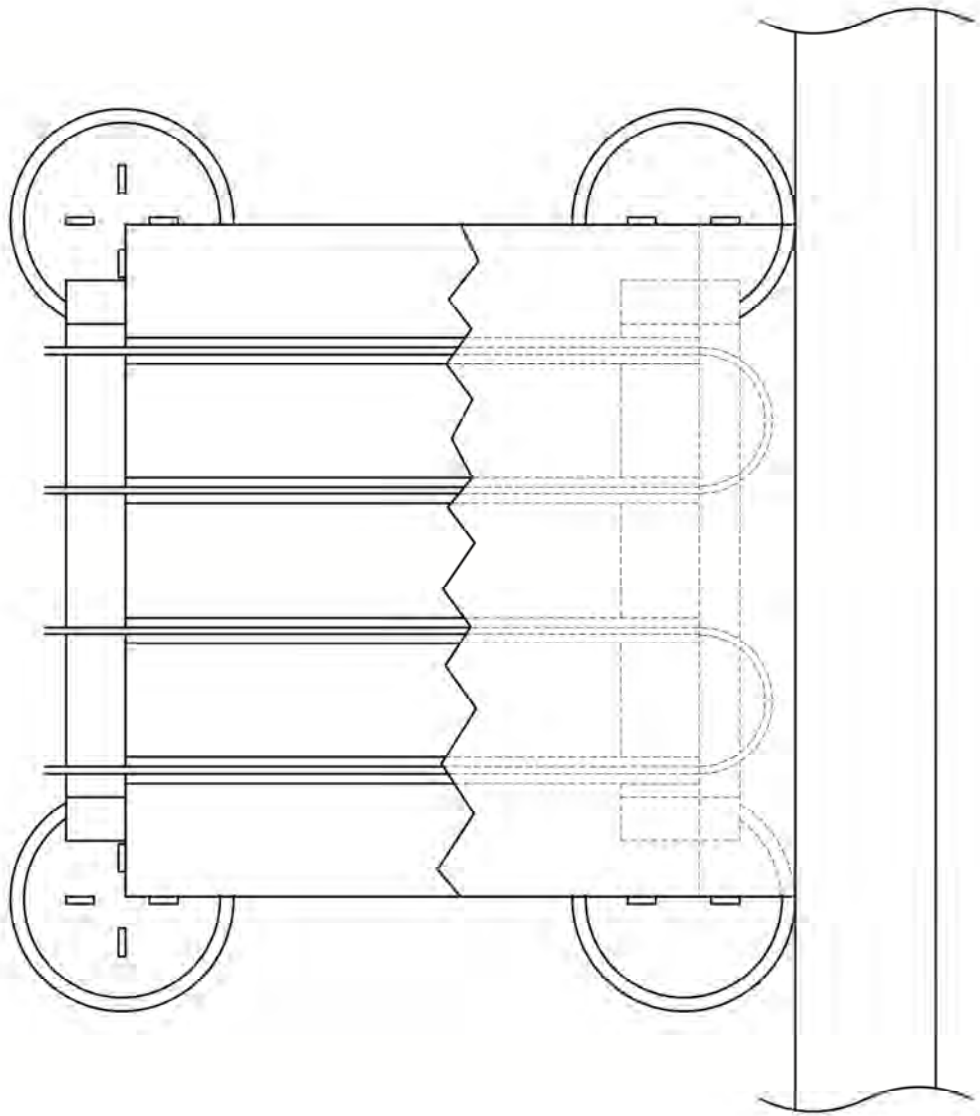
4. START THE RUN OF CABLE WHERE SPECIFIED ON THE PROVIDED LAYOUT FOR YOUR THE HOTT-WIRE MI CABLE INSTRUCTIONS WHEN INSTALLING THE CABLE. CABLES A GROOVE AND TAPED DOWN WITH THE PROVIDED HEAVYDUTYALUMINUM TAPE TO H PLACE. LAYOUTS WILL VARY NOTE: CABLES MAKE A BEND OUTSIDE OF THE PAN SYS' NING FROM RUN TO RUN, ACROSS PANS AND ALSO AT THE ENDS OF THE PAVER SYST LEAD ASSEMBLIES EXIT THE PAN SYSTEM TO ALLOW COLD LEADS TO RUN TO THE P THE PAN SYSTEM. MAKE SURE TO FOLLOW LOCAL BUILDING CODES WHEN RUNNING CONDUIT MAYBE REQUIRED AS A SLEEVE.

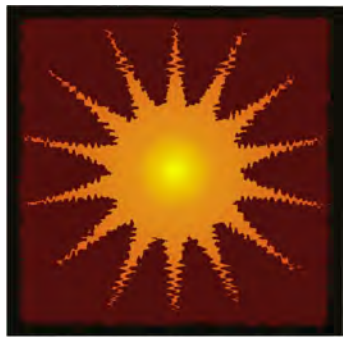


5. CAREFULLY PLACE THE PAVERS ON TOP OF THE PAN SYSTEM WHILE MAKING SURE CURED IN THE PAN SYSTEM.



6. WHERE HEATING CABLE TURNS MUST BE MADE AGAINST A WALL OR WHERE A PAVER
THE PAN MUST BE CUT 5" SHORTER THAN THE PAVER TO ALLOW FOR HEATING ELEM
MADE. DO NOT ALLOW THE HEATING ELEMENT TO TOUCH THE ROOFING MATERIAL
THEYMUST BE FREE AND OPEN TO AIR. ALWAYS USE A BRACKET TO SUPPORT THE PA
ACROSS PEDESTALS. SEE THE ILLUSTRATION BELOW.





HEATIZON
SYSTEMS

Mail: Heatizon Systems
4137 South 500 West
Murray, UT 84123
USA

Phone: (801) 293-1232

Toll Free: (888) 239-1232

Fax: (801) 293-3077

Email: info@heatizon.com

Website: www.heatizon.com